

## Omni-Gard (OG)



OmniGard is a compression-loaded peripherally scored reverse bursting disc. It offers the user liquid as well as gas and vapour compatibility with the high operating ratio characteristics. Elfab's unique offset tag and System-Loc arrangement offer the Omni-Gard user foolproof installation.

- Liquid, gas and vapour compatible
- Excellent operating performance
- Superior cyclic performance
- Foolproof and safe installation
- Smooth operating surface
- Non-fragmenting design

<b>Specifications</b>	
SIZE RANGE	50 to 250 mm (2 to 10 ins)
BURST PRESSURE RANGE	2.0 to 70 bar g (30 to 1015 psig)
TEMPERATURE RANGE	-200 to 200C (-330 to 400)
MAXIMUM OPERATING RATIO	95%
FRAGMENTATION ON BURST	non fragmenting design
RELIEF VALVE ISOLATION	excellent
VACUUM SERVICE	suitable
FLUID COMPATIBILITY	liquid, gas or vapour
TORQUE-SENSITIVE	no
CYCLE LIFE	excellent
MATERIAL RANGE	good
REVERSAL RATIO	not applicable with offset tag + System-Loc
DAMAGE RATIO	<1 (fail-safe)
LEAK TIGHTNESS	excellent
PERFORMANCE TOLERANCE	5%*(with no manufacturing range)
PROTECTIVE LININGS	available

## Pressure and Solutions Intelligence

Elfab is an ISO 9001:2000 Certified Company and all Elfab's bursting discs are manufactured in-house to the highest standards, being tested and certified in accordance with BS2915, the British Standard for bursting discs. To ensure the correct performance of a bursting disc, it must be used in its correct holder, as specified by the bursting disc manufacturer.

As the temperature seen by a bursting disc changes its burst pressure and performance will change. As a result of extensive testing, Elfab can advise on these changes, or on other technical matters, such as discharge requirements, material selection and corrosion resistance, customised designs and burst detection.

## Specifications and Performance

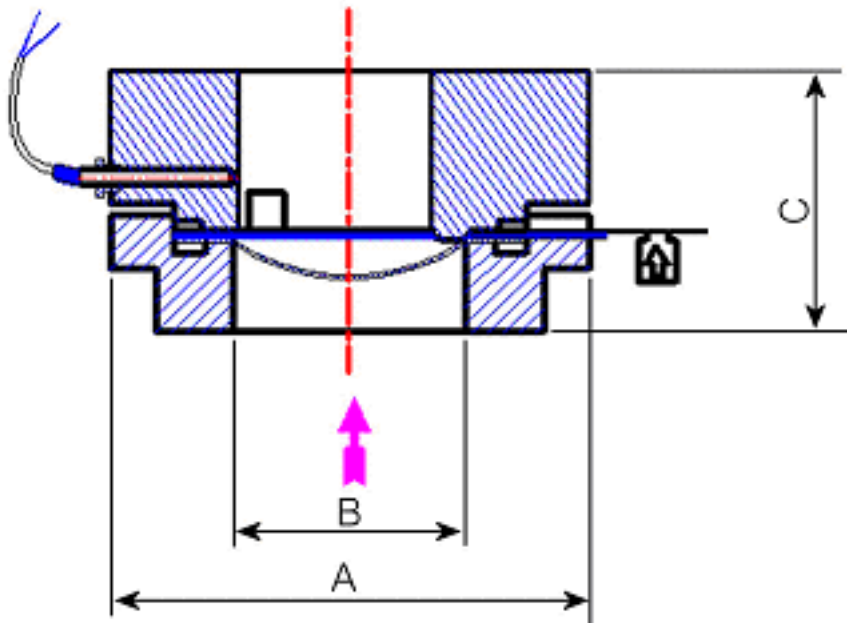
<b>BURST PRESSURE RANGE in barg (psig) at 20 °C (68 °F)</b>					
<i>Nominal Size</i>		<i>Nickel</i>		<i>Stainless Steel/ Inconel</i>	
<i>Mm</i>	<i>inch</i>	<i>Min</i>	<i>Max</i>	<i>Min</i>	<i>Max</i>
50	2	5.0(72.5)	40 (580)	7.0 (102)	70 (1015)
80	3	4.5 (65.3)	25 (363)	6.0 (87)	35 (508)
100	4	3.5 (50.8)	20 (290)	4.5(65.3)	25 (363)
150	6	2.5 (36.3)	17 (247)	3.0(43.5)	20 (290)
200	8	2.5 (36.3)	15 (218)	3.0(43.5)	15 (218)
250	10	2.0 (29)	10 (145)	2.5(36.3)	12 (174)

<b>PERFORMANCE TOLERANCE (ZERO MANUFACTURING DESIGN RANGE)</b>	
<i>Burst Pressure</i>	<i>Tolerance</i>
Entire Range	+/- 5%

<b>Material Temperature Limits °C (°F)</b>		
<i>Material</i>	<i>Minimum</i>	<i>Maximum</i>
Stainless Steel	-80 (-112)	480 (900)
Inconel	-80 (-112)	600 (1112)
Nickel	-80 (-112)	400 (750)
Fluoropolymer Liner	-80 (-112)	280 (536)

<b>FREE FLOW AREA / MINIMUM NET FLOW AREA (MNFA)</b>					
<i>Nominal Size</i>		<i>Burst Pressure at or Below 10barg (145psig)</i>		<i>Burst Pressure Above 10barg (145psig)</i>	
<i>mm</i>	<i>inch</i>	<i>mm<sup>2</sup></i>	<i>inch<sup>2</sup></i>	<i>mm<sup>2</sup></i>	<i>inch<sup>2</sup></i>
50	2	1918	2.97	1897	2.94
80	3	4594	7.12	4744	7.35
100	4	7125	11.04	7366	11.42
150	6	15421	23.90	16086	24.93
200	8	26853	41.62	28201	43.71
250	10	39013	60.47	41102	63.71

HOLDER DIMENSIONS					
Nominal Size B		Height C		Outside Diameter A	
mm	inch	mm	inch	BS EN 1092	ANSI
50	2	54	2.13	PN 6 to 50	150 to 600lb
80	3	82	3.23	PN 6 to 50	150 to 600lb
100	4	100	3.94	PN 6 to 50	150 to 600lb
150	6	146	5.75	PN 6 to 50	150 to 600lb
200	8	226	8.90	PN 6 to 50	150 to 600lb
250	10	250	9.84	PN 6 to 50	150 to 600lb



### Pressure Intelligence

The data shown on these sheets represents the standard offering from Elfab. Depending upon the requirements of your application, Elfab may be able to provide a solution based on this product but outside the standard operating parameters. In addition, Elfab produces an extensive range of alternative products which may be more suitable for your requirements.

As a result of extensive testing, Elfab can advise on these choices, or on other technical matters, such as discharge requirements, temperature testing, material selection and corrosion resistance, customised designs and burst detection.

**To discuss your specific product or service requirements please contact your Elfab representative.**



© 2004 Elfab Ltd.

